

# GeoCloud Drive

Share. Collaborate. Be sure.

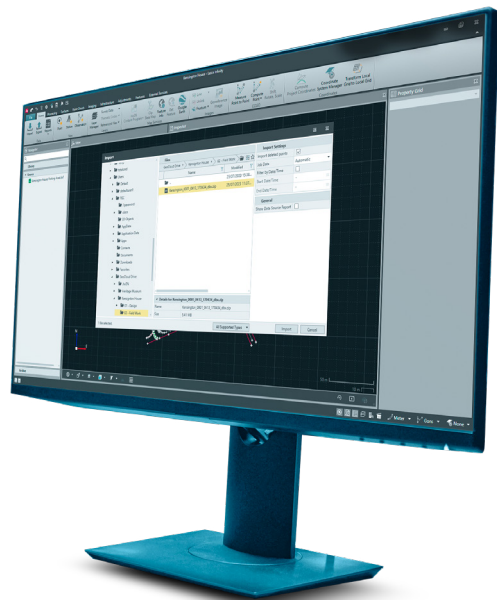
GeoCloud Drive is a secure cloud storage and data exchange service for surveying and construction professionals. It connects the field to the office, allowing you to efficiently save and share data. GeoCloud Drive ensures your data is always up-to-date, reducing rework and providing peace of mind. Whether managing geospatial data or collaborating across teams, GeoCloud Drive and its intuitive tools make sure projects stay on track.

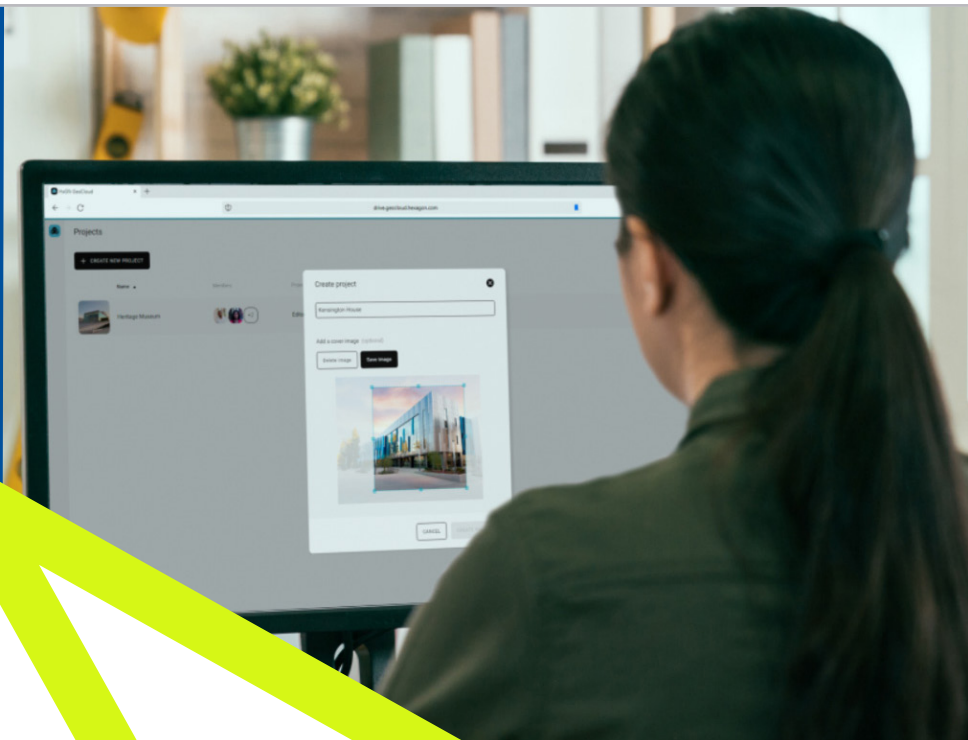


GeoCloud Drive

Windows  
Office  
Software

Field  
Software





### Embrace field to office connectivity

GeoCloud Drive is a data transfer and storage service providing flexible access to your data. It is part of HxGN GeoCloud, a cloud-based collaboration portal powered by HxDR, Hexagon's cloud-native platform for geospatial solutions at any scale.



### Simplify data and project management

GeoCloud Drive comes with a Web App for file- and project management. Create and conveniently oversee all ongoing and past projects. Upload data from your PC to the project and easily manage your folder structure.



### Save time, reduce errors

Access and transfer data with GeoCloud Drive using Leica Geosystems field software. Use the Desktop Synchronisation App to instantly access cloud data locally for use with office software like Leica Infinity. Verify data in the office while crews are still on site, ensuring confidence and peace of mind.

Web App - Technical Facts			
Project Administration Features	Project Management	<ul style="list-style-type: none"><li>Create an unlimited number of new projects</li><li>Edit the cover image of a project</li><li>Upload a cover image for a project</li><li>Rename a project</li><li>Remove a project</li></ul>	
	Project Membership Administration	<ul style="list-style-type: none"><li>Add and remove project members</li><li>Leave a project (in case you are not the owner of a project)</li></ul>	
File Manager Features	File Operations	<ul style="list-style-type: none"><li>Upload file</li><li>Rename file</li><li>Remove file</li><li>Copy file</li></ul>	
	Folder Operations	<ul style="list-style-type: none"><li>Create folder</li><li>Upload folder</li><li>Rename folder</li><li>Remove folder</li></ul>	
Supported Web Browsers	<ul style="list-style-type: none"><li>Microsoft Edge</li><li>Google Chrome</li></ul>		
Desktop Synchronisation App - Technical Facts			
Features	<ul style="list-style-type: none"><li>Cloud storage integration into the Windows file system</li><li>Constant synchronisation of the folder structure with the cloud service</li><li>Download files on-demand</li><li>Use files directly with Windows office software like Leica Infinity</li></ul>		
Installation Details	Manual installation via executable (installation per user)		
System Requirements	Operating System	Windows 10 64-Bit (21H2) or Windows 11	
	Hardware Requirements	Minimum	Recommended
	CPU	2x 1.5 GHz	2x 1.5 GHz
	RAM	4GB	8GB
	Disk Storage	500 MB + Storage for files	500 MB + Storage for files
Leica Captivate & Leica iCON Field Software Integration*			
Features	<ul style="list-style-type: none"><li>Download and upload jobs, user objects and data files</li><li>Browse project folders to download files and select locations for upload</li><li>Automatic zipping of jobs before the upload to ensure efficient data transfer</li><li>View status of file transfers and solve transfer conflicts</li></ul>		
Security			
Encryption for data in transit	TLS 1.2/1.3		
Encryption for data on cloud storage	AES-256		
Data server location (depends on IP address)	Europe, USA, Canada, United Arab Emirates		
User server location	Switzerland (Zurich)		
Authentication & Authorization method	OIDC / OAuth2		
Two-factor authentication (2FA)	(optional) TOTP via an authenticator app		
External security assessment (Penetration tests)	Performed regularly by an external company		
Customisable GeoCloud Drive 1 year plans			
GeoCloud Drive Subscription	<ul style="list-style-type: none"><li>Yearly subscription for a cloud storage on HxGN GeoCloud. The subscription includes 25GB storage and 1 user</li></ul>		
GeoCloud Drive add User Subscription	<ul style="list-style-type: none"><li>Yearly subscription to extend cloud storage on HxGN GeoCloud by 1 user and 25GB storage</li></ul>		
GeoCloud Drive add Data Subscription	<ul style="list-style-type: none"><li>Yearly subscription to extend cloud storage on HxGN GeoCloud by 100GB</li></ul>		

\*Leica Captivate: Available from version 8.10 onwards. Leica iCON build & Leica iCON site: Available from version 8.00 onwards. The GeoCloud Drive service can be used in Leica field software without any additional licence.

Hexagon, is the global leader in precision technologies at any scale. Our digital twins, robotics and AI solutions are transforming the industries that shape our reality.

Hexagon (Nasdaq Stockholm: HEXA B) has approximately 24,800 employees in 50 countries and net sales of approximately 5.4bn EUR. Learn more at [hexagon.com](https://www.hexagon.com) and follow us [@HexagonAB](https://twitter.com/HexagonAB).